

MTL RugiCam-IP Mk 2

Intrinsically Safe HD network Camera

- Intrinsically Safe ATEX / IECEx / QLD Certification
- Ex ia I Ma (M1 mining). Ex ia IIB T4 Ga; Ex ia IIIC T 135°C Da (non-mining) Ta = -40°C to +60°C

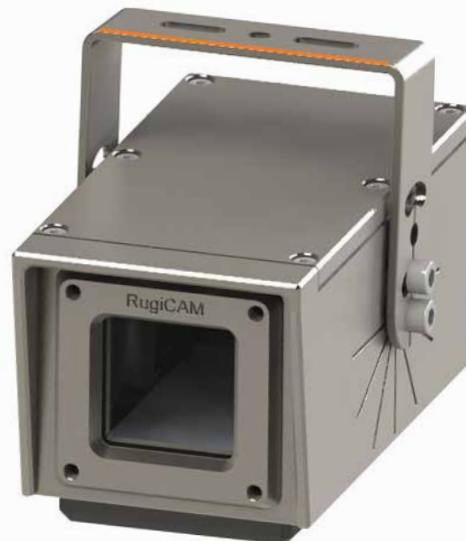
FEATURES:

- Resolution 1920x1080, 1290x720 (main) + D1, VGA, CIF (sub-stream)
- 1/2.8" SONY Back-Illuminated CMOS Starlight Technology Sensor + HS3516D DSP
- Min. illumination 0.001Lux + Wide Dynamic Range (WDR)
- Mega-Pixel 4mm f1.6 IR Lens
- H.264 + H.265 Server, MJPEG and Adjustable Frame Rate - Controls Network Bandwidth Usage (30fps max)
- 10/100 IS Ethernet LAN Interface supports upto 100m Cat5e Connection
- Wi-Fi supporting 802.11 b/g/n standards at up to 150Mbps – with integral antenna 'Puck' design
- LED indication (on rear) – Power / LAN / WLAN
- ONVIF 2.4
- Backup and Restore of Configuration Settings

The **MTL RugiCAM-IP MK2** is an Intrinsically Safe (IS) Network Camera ideally suited to Group I Mining applications.

It connects directly to compatible IS Ethernet Systems via a wired LAN cable or Wi-Fi (both work concurrently). The small, rugged and cost effective design makes it the ideal choice for many applications:

- Petrochem** - Drill Rigs, Process Monitoring, Remote Safety Inspections, Hazardous Zone Security....
- Mining** - Conveyor Transfer Points, Bunkers, Fan Sites, Face Roof Supports (Chocks/ Shields)....



Features Continued:

- 12VDC IS Power Supply Input or PoEx™ (Power over IS Ethernet)
- Rugged IP66 rated polished 316 Stainless Steel Enclosure suitable for harsh environments
- Compact dimensions (W:87xH:79xD:165mm)
- Plug & Socket Connections - shortens installation time

The **MTL RugiCAM-IP MK2** is an improved version of the popular MK1 model. It features Full HD 1080P resolution and supports video streaming via the H.264 or H.265 compression standards and/or Motion JPEG with frame rate selectable to reduce network bandwidth. All configuration is by a standard web browser or ONVIF compliant tool (settings can be backed up and restored to file).

The camera body is manufactured from high quality polished **316 stainless steel** to suit harsh Group I Mining applications. A 6mm thick toughened glass window provides optimal protection in the harsh environment.

As well as adding H.265 compression and MJPEG support this new MK2 version also features an enhanced low-light image sensor with wide dynamic range ideal for underground use. The Wi-Fi antenna is integrated into a 'Puck' design on the bottom of the enclosure to improve on the ruggedness of the MK1 external antenna connector arrangement



Eaton Electric Limited,
Great Marlings, Butterfield, Luton
Beds, LU2 8DL, UK.
Tel: + 44 (0)1582 723633 Fax: + 44 (0)1582 422283 E-mail: mtlenquiry@eaton.com
www.mtl-inst.com

© 2018 Eaton
All Rights Reserved
Publication No. EPS MTL RugiCAM-IP MK 2 060718 July 2018

The given data is only intended as a product description and should not be regarded as a legal warranty of properties or guarantee. In the interest of further technical developments, we reserve the right to make design changes.