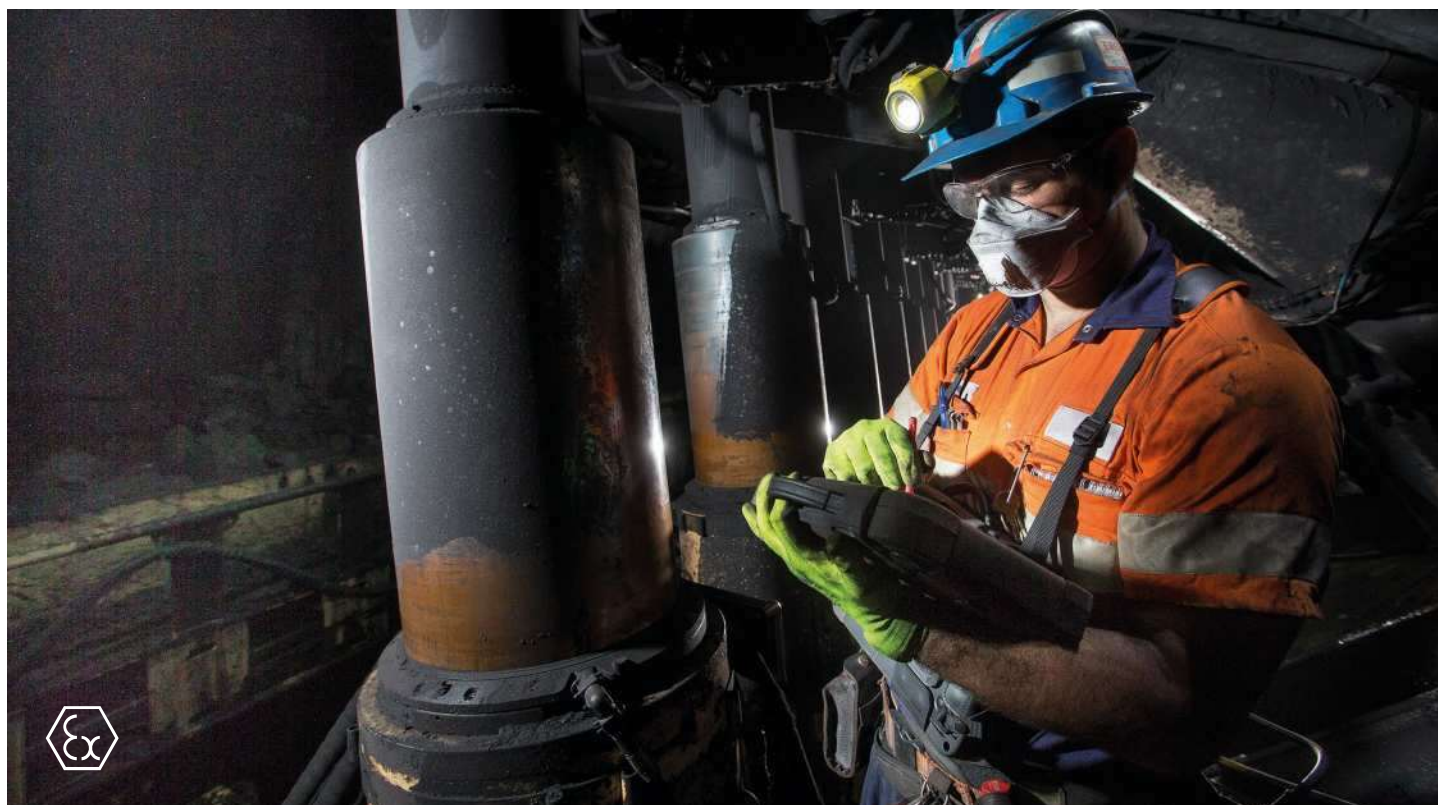


Agile X IS

Industrial PC Tablet for Underground Mining

Certified for use Australia wide. IECEx Sim 18.0009 Group 1 Ex ia



Description

The BARTEC Agile X IS is a robust, flexible and powerful industrial tablet PC for rough working conditions and environments. It has numerous international certifications and can operate throughout the world. The tablet PC has been certified for ATEX and IECEx as well as for UL Class I Division 1. Thanks to its many functions, the Agile X IS is the perfect device for service technicians, engineers project managers and deputies in the field of underground mining.

Scope of Delivery

Power supply and power cable (AU), cover module (if no external battery is included), dual stylus, quick start guide.

- Extremely flexible industrial tablet PC with Intel quad core processor, developed especially and certified for rough and potentially explosive working mining environments
- Ergonomically positioned, quality 1D/2D imager from Zebra
- High-resolution 10.1" touch LCD display, that is also readable in direct sunlight. Agile X IS can also operate in rainy conditions, while using gloves.
- Hot swappable battery - replace the battery while working within the hazardous environment
- Comprehensive range of accessories for greater productivity and operator safety

Field Carry Accessories



Leather carry case



4-point belt



Battery case



Shoulder strap

Desktop and Charging Accessories



Desktop Docking Station



Table top charger dual compartment





Hot swap battery 4200mA



Bartec USB Drive

Explosion protection for MINING

Temperature range	$-20\text{ }^{\circ}\text{C} (-4\text{ }^{\circ}\text{F}) \leq T_a \leq +50\text{ }^{\circ}\text{C} (+122\text{ }^{\circ}\text{F})$; IP 65	
Marking ATEX	M1/Ma	 I M1 Ex ia op is I Ma
	M2/Mb	 I M2 Ex ia op is I Mb
Certification	DEMCO 16 ATEX 1803	
Marking IECEx Simtars	Ma	Ex ia I Ma
	Mb	Ex ia I Mb
Certification	IECEx SIM 18.0009	
Other approvals and certificates, see www.bartec.com/au		

Technical data

Processor	Intel N3710 1.6 GHz (turbo 2.56 GHz)	
System memory	8 GB SODIM DDR3L-1600	
Mass storage	128 GB SATA uSSD	
Operating system	Windows® 10 IoT Enterprise CBB Windows® Embedded 8.1 Industry Pro	
Display	double bonding Gorilla Glass LCD, Resolution 1920 x 1200 pixel	
Size (L x H x W)	290 mm x 209 mm x 33 mm	
Weight	2.3 kg	
Operating temperature	-20 °C to +50 °C (exclude cold start)	
Camera	Front: 2 MP camera Rear: 5 MP autofocus camera with flash	
Battery capacity	Internal battery: 7.4 V typ. 4200 mAh External battery: 7.4 V typ. 4200 mAh	
Battery charging time	Internal battery: approx. 3 h Internal and external battery: approx. 5 h	
External battery can be hot swapped in hazardous areas.		
Wireless communication	WLAN	IEEE 802.11 a/b/g/n/ac on board 2 antennas
	Bluetooth	BT 4.1 LE Class I
Hotkey buttons	Front: Power, Home/Menu, Fn 1 (programmable) Upper right: Volume +, Volume -, Fn 2 (programmable)	

automatedcontrol

SENSE | MONITOR | CONTROL

 (02) 4964 4022

www.automatedcontrol.com.au